

EUniWell Research Incubator: Frequently Asked Questions (FAQs)

Here are some of the questions we have received about the EUniWell Research Incubator so far. If you have a question which isn't on the list, please contact the team at: euniwell-incubator@contacts.bham.ac.uk

Where can I find out more about the EUniWell partner universities and associate partner organisations?

We are happy to help you with a partner search if required. If you would like to conduct your own research, you can find the [websites of each partner university](#) on our website.

We are holding an information and networking session on 19 January 2023. [Register your interest](#) to join and meet potential partners and contacts in other EUniWell Universities.

Remember you can also advertise your workshop via our online portal. Instructions on how to use the portal are available [here](#).

Where can I find the application form?

Please complete this brief online [application form](#) by 23:59 (UTC) on 17 February 2023. Note this is different to the form you need to fill in to advertise your workshop on the online platform.

What can we do during the workshops?

As long as the workshop is held online and has representation from at least three EUniWell partners, the content is really up to you. Here are some suggestions:

- A networking session for researchers with common interests,
- A scoping session for researchers to identify potential for collaboration,
- A planning session for researchers who already have an idea for collaboration and want to apply for follow-on funding.

How long do the workshops have to be?

This is also up to you. As the workshops are online we'd suggest avoiding anything beyond three hours and / or ensuring there is a reasonable break from the screen for participants for longer sessions.

Is there a minimum (or maximum) number of participants?

There must be representation from at least three EUniWell partner universities at the workshop but there is no minimum or maximum number of participants.

Can we open participation in the workshops to anyone?

As long as you have representatives of three EUniWell partner universities at the workshop, other participants can also join. We would actively encourage you to try to involve representatives of our associate partners and will be happy to support you to engage with these.

Can I apply for funding without holding a workshop?

No. Follow-on funding is only available to EUniWell researchers who have held a workshop. However, if you already have an established connection with your partners and an idea of what you'd like to do, you could use the workshop to plan out your application for the follow-on funding.

Does the lead partner for the workshop have to be the lead partner for the follow-on funding?

No. It is fine for you to decide during the workshop which partner will be the lead in applying for follow-up funding. Grants will be distributed between the different partners according to the allocation you outline in your application, but the lead partner will be the main contact for the project.

Do all workshop partners have to be involved in a follow-up funding application?

No. Funding applications will require a minimum of three EUniWell partners though. New partners such as the University of Murcia and Taras Shevchenko National University of Kyiv (KNU) will count as one of these three but will not be eligible to receive funding.

What kind of activities can be funded through the follow-on funding? Is there anything that can't be funded?

- Activities must be related to research. Here are some examples:
 - small-scale comparative research across partner countries, e.g. an online survey;
 - mapping of facilities / approaches across partners to identify synergies and opportunities;
 - setting up a network of researchers.
- We are ideally looking for an idea that can 'grow', as the aim of the follow-on funding is to help with your initial start-up phase for further collaboration in the future.

- In order to avoid double funding, it is important to ensure that none of the project costs are already covered by an existing EU or national grant.

Can new EUniWell partners (Murcia, Konstanz, KNU) receive funding via the Well-being Research Incubator?

At the moment, funding is only available to founding members of the EUniWell Alliance: University of Birmingham, University of Cologne, University of Florence, Linnaeus University, Nantes Université and Semmelweis University. Partners which have recently joined the Alliance are still encouraged to take part in both workshops and follow-on projects. Please note however that the University of Konstanz is not participating in this Call for Workshops.

What is the difference between the Well-being Incubator and the EUniWell Seed Funding Programme?

The well-being incubator is funded through a Horizon 2020 grant to the EUniWell partnership and specifically focuses on supporting collaboration in research. Researchers apply to run an online collaborative workshop, and **follow-on funding is only open to workshop participants**. Each project must involve at least three EUniWell partner institutions.

As the Incubator follow-on grants are financed through **EU funding**, they are subject to a number of specific requirements associated with this (e.g. requirement to display the EU emblem on communications materials). Projects supported through the Well-being Reserach Incubator will need to be completed within the prescribed timeline (12, 9 or 6 months depending on the date of the call), in line with the end date of our Horizon 2020 grant. **New EuniWell partners (Murcia, Konstanz, KNU) are not eligible for funding from the EUniWell Incubator.**

The EUniWell [Seed Funding Programme](#) is financed from **EUniWell partners' own contributions**. Grants are available for applicants from all participating universities, plus KNU, and are intended to promote collaborative, grassroots projects initiated by researchers, students, teachers and administrative staff. Each project must involve **at least four EUniWell partner institutions**. The grants can be used to support a **wider range of activities**, for example projects relating to education and pedagogy, student-led initiatives, and support service projects in line with EUniWell's core mission to improve well-being within universities and society as a whole. This is different to the well-being incubator which focuses fully on research. Projects are expected to be completed within 12 months of the award of the grant.

The flow chart below (Figure 1) is intended to help you to understand whether your project idea is better suited to the Well-being Research Incubator or the Seed Funding Programme. A timetable is also provided (Figure 2) which shows key dates for both the Incubator and the Seed Funding Programme.

Figure 1: Which EUniWell funding source best suits your idea?

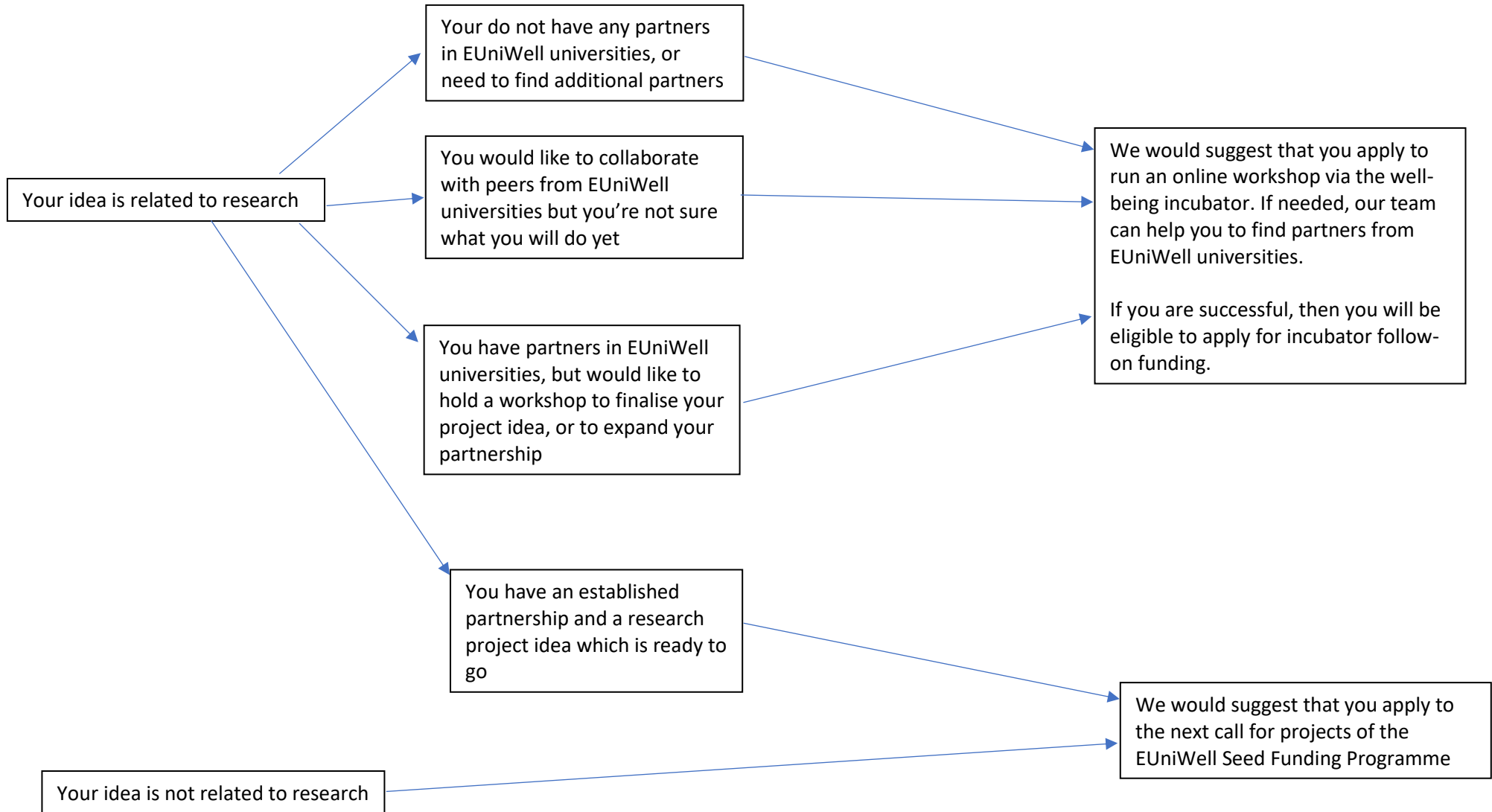


Figure 2: Timetable of key dates

Well-being Incubator call for workshops opens	Well-being Incubator call for workshops closes	Well-being Incubator workshops delivered	Well-being Incubator call for projects opens	Well-being Incubator call for projects closes	Well-being Incubator project delivery timeframe
Dec 2022	Feb 2023	April - May 2023	May 23	Jul 23	Sept 23 – Jun 24 (Up to 9 months)
Mar 2023	May 2023	Jun - Oct 2023	Oct 23	Dec 23	Jan 24 – Jul 24 (Up to 6 months)
Seed Funding Call opens		Seed Funding Call closes		Seed Funding project delivery timeframe	
6 Feb 2023		7 April 2023		1 June 2023 – 31 May 2024 (12 months)	